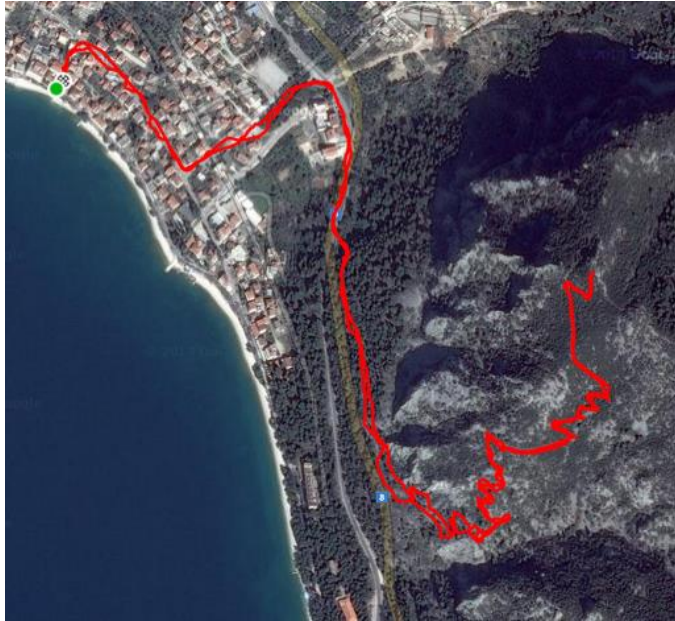




Lower Mountain Top Vrisije –



This wonderful mountain hike takes you to our lower tops around Gradac but one of the most beautiful – Vrisije. It's in our point of view for intermediate hikers, due to quite harsh stone trail terrain and a quite steep climb. Since it takes you to the east mountain it offers you a wonderful view of Gradac, the surrounding mountains and islands. The nice thing with Vrisije is that the mountain is so near to Gradac so you have the feeling you hold our little Village in your hands, and within a few kilometres you are already up there. Like all our mapped hikes it starts in front of the hotel and leads you up the steps to the middle road. Turn right like you are going to the main road and bus station. By the main road turn right and stay walking towards South (Dubrovnik) for 400m. On the left side of the road (the mountain side) you will see a wood sign showing an arrow up the forest. The trail start through thick pine forest and offers nice shadows the first kilometre. After the easier part you find your self in the open on old karst stone trails. Just follow the trail and you will reach the top. Please stick to the Trail because leaving the trail can be life dangerous due to cliffs, canyons and big holes our Karst Mountains are full with. Also do never enter deep grass or climb any trees where you can't see where you're stepping because snakes can appear. Anyhow let not the snakes scare you, they are always gone long before you can see them – therefore always walk a little bit "louder". This tour is recommended in early morning or late afternoon in warmer periods. If you don't want to walk your self but also learn more about our climate, vegetation and history this tour can be done with our Hotel Guide.



Difficulty: 6/10

Distance: 5,4km (up down)

Moving Time: 50min up

Tips & Tricks: Go early or 2-3h before sunset
Carry good shoes – the road is very stony.

Steps up, turn right on middle road for 300m, turn left and walk uphill to main road and turn right by Mercedes shop. Continue direction south Dubrovnik a few hundred meters

By WP3 follow the trail up the forest. It will stay nice shady in the beginning but soon you come out on the Stone trail and sun. Keep walking until you reach the top. The trail will end.



WP2 – intersection

WP3 up in hills

WP3

The stone trail up



Things you should have with you when walking our mountains.

Mobil phone (good for nice photos, you can use navigation over STRAVA.COM, and emergency calls)

Water (at least one litter for this tour... but for longer bring more).

Real Shoes (Running shoes, hiking shoes are fine as long you don't go up with slippers or sandals)

Never leave the walking trail or enter thick forest or high grass because of snakes and spiders. If you stay on the road the Snake will be gone long before you arrive and you will also always have good visibility.

Also just leave a short message on the Reception that you have left especially when going for the mountain tops Vrisije or Paskal.

Emergency Calls is 112 or call the hotel for question or problems: **021 695 060**

